

G 1/2

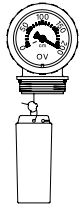
100 200

DIN 4755.

**206 00 12**

EL

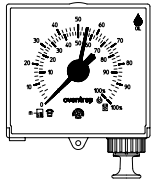
44



G 1/2

0 - 200

**206 03 12**



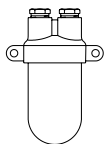
100 300  
%

**206 04 00**

50

6

1.500	<b>206 04 51</b>
2.000	<b>206 04 52</b>
3.000	<b>206 04 53</b>
5.000	<b>206 04 55</b>
6.000	<b>206 04 56</b>
7.000	<b>206 04 70</b>
10.000	<b>206 04 58</b>
13.000	<b>206 04 60</b>
15.000	<b>206 04 61</b>
16.000	<b>206 04 71</b>
20.000	<b>206 04 62</b>
25.000	<b>206 04 63</b>
30.000	<b>206 04 64</b>
40.000	<b>206 04 65</b>
50.000	<b>206 04 66</b>
60.000	<b>206 04 67</b>
80.000	<b>206 04 68</b>
100.000	<b>206 04 69</b>



6 x 6

(2) **206 10 51**

(  
4 . 9.26)